

Public Health Improvement Plan 2013- 2018

San Juan Basin Health Department
Archuleta and La Plata Counties, Colorado
December 6, 2013

Acknowledgments

Citizens Health Advisory Council

Colorado Department of Public Health and Environment (CDPHE)

Health Alliance of La Plata County

Mercy Regional Medical Center

Pagosa Springs Medical Center

San Juan Basin Health Department Staff and Board of Health

Southwest Colorado Area Health Education Center (SWCAHEC)

Participants of the stakeholder and community meetings

Outline

- Why and How Engage in Public Health Improvement Planning (PHIP)
- Process to create Public Health Improvement Plan
 - Community Health Assessment
 - Prioritization
 - Capacity Estimation
- The Plan
 - Frameworks
 - Priority Areas
 - Action Plans

Outline

- Why and How to Engage in Public Health Improvement Planning (PHIP)

Why create a PHIP?

- Colorado's Public Health Act of 2008 (SB 08-194)
 - Assure that core services are available to [every person](#)
 - Set standards for performance
 - Mandates local public health agencies engage in PHIP process
 - PHIP must:
 - be completed every 5 years
 - be consistent with statewide improvement plan
 - engage the public health *system*

Why create a PHIP?

- Provide a baseline by which to monitor change
- Identify emerging issues
- Help the community set health priorities and focus resources
- Provide facts upon which to base programmatic or organizational decisions
- Help partners to plan effective, collaborative interventions
- Increase the ability to secure new funding
- Support advocacy for policy changes

Office of Planning and Partnership (OPP)
Colorado Department of Public Health and Environment (CDPHE)

How to create a PHIP

- | | |
|---------------|--|
| 2011-
2012 | I. Plan the process
II. Engage stakeholders
III. Assess community health
IV. Assess system capacity
V. Prioritize issues |
| 2013 | VI. Create a PHIP |
| 2013-
2018 | VII. Implement, promote, and monitor the plan
VIII. Inform and participate in statewide PHIP |

Outline

- Why and How Engage in Public Health Improvement Planning (PHIP)
- Process to create Public Health Improvement Plan
 - Community Health Assessment
 - Prioritization
 - Capacity Estimation

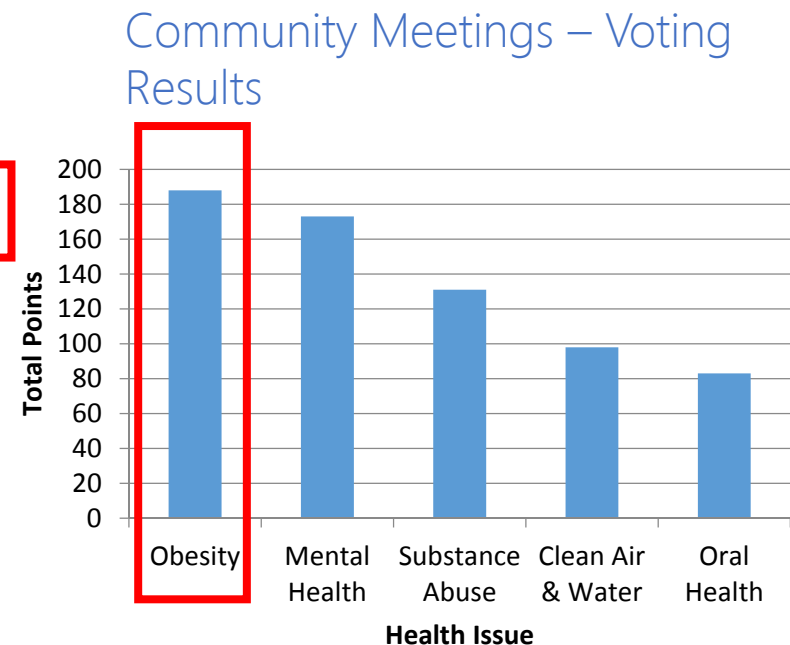
Community Health Assessment

- Completed Spring 2012
- Partnership between: SJBH, Mercy Regional Medical Center, Pagosa Springs Medical Center
- Led by a planning committee
- Hosted community stakeholder meetings
- Reviewed data describing health topics and estimated capacity to improve topics:
 - Access to care, cancer, obesity, tobacco, clean air and water, infectious disease, injury, mental health, substance abuse, oral health, unintended pregnancy

Prioritization Process

- Completed Fall 2012
- 3 efforts to select top health concerns: Internal meetings, Web-based survey, Community Meetings

Health Priorities Survey			SJBH Prioritization
Rank	Significant Impact	Focus to address	Key health concern
1	Access to care	Access to care	Access to care
2	Mental health	Mental health	Obesity
3	Clean air and water	Obesity	Mental health
4	Obesity	Clean air and water	Clean air and water
5	Cancer	Substance abuse	Poverty
6	Substance abuse	Oral health	Substance abuse
7	Oral health	Cancer	Oral health



Images obtained from Prioritization Process Report, for complete Report visit:
www.sjbhd.org

Prioritization Process

- Completed Fall 2012
- Priority areas selected:
 - Access to Care
 - Obesity

For complete Prioritization Process Report
visit: www.sjbhd.org

PHIP Document Development

- Fall 2013
- Goals:
 - Merge the work that has been completed into PHIP
 - Provide a framework for the new SJBH Health Planner
 - Create a living plan with process-oriented goals, strategies and interventions
 - Meet December 31, 2013 deadline

Outline

- Why and How Engage in Public Health Improvement Planning (PHIP)
- Process to create Public Health Improvement Plan
 - Community Health Assessment
 - Prioritization
 - Capacity Estimation
- The Plan
 - Frameworks
 - Priority Areas
 - Action Plans

PHIP Plan Frameworks

- Selected Frameworks to Guide Interventions and Strategies:
 1. Evidence-Based Public Health Practice
 2. Collective Impact

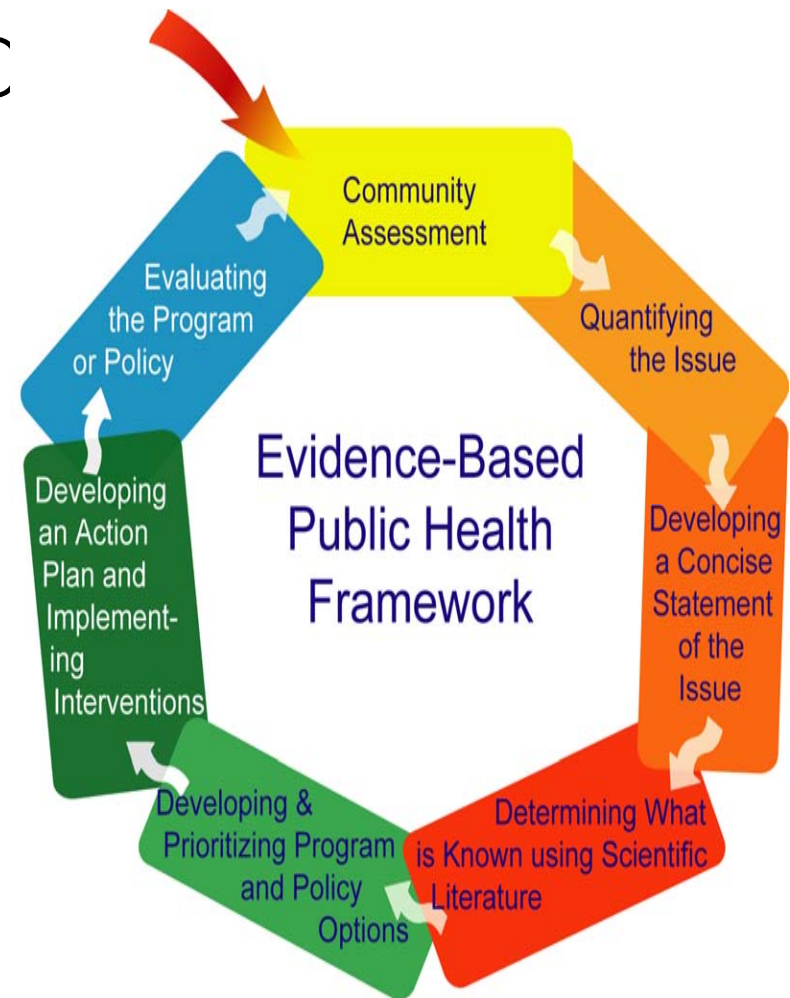
PHIP Plan Frameworks

- Evidence-Based Public Health Practice
 - Supports decision-making processes through 7 steps
 - Community Assessment
 - Quantifying the Issue
 - Developing a Concise Statement of the Issue
 - Determining what is known using Scientific Literature
 - Developing and Prioritizing Program and Policy Options
 - Developing an Action Plan and Implementing Interventions
 - Evaluating the Program or Policy
 - San Juan Basin Health staff training provided October 2012

Brownson RC, Fielding JE, Maylahn CM. *Evidence-based public health: a fundamental concept for public health practice*. Annual Reviews in Public Health. 30:175-201. 2009

PHIP Plan Framewc

- Evidence-Based Public Health Practice
 - Framework for creating:
 1. Higher likelihood of a successful program
 2. Reducing cost
 3. Impacting the population



Brownson RC, Fielding JE, Maylahn CM. *Evidence-based public health: a fundamental concept for public health practice*. Annual Reviews in Public Health. 30:175-201. 2009

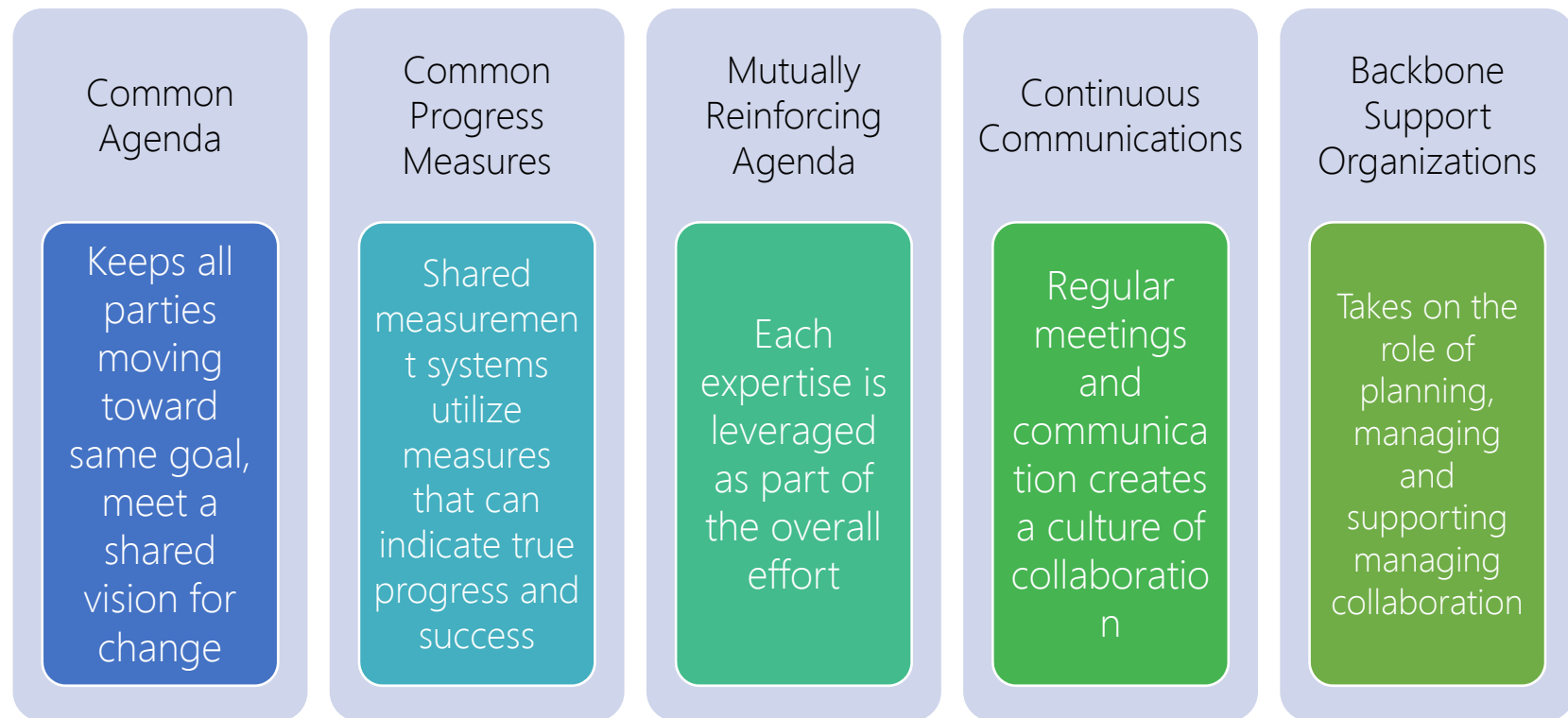
PHIP Plan Frameworks

- Collective Impact

- Purpose is to create effective and efficient action and meaningful, sustainable change
- Contrasted to 'isolated impact' (i.e., working alone)
- Framework for creating:
 - Structured form of collaboration

PHIP Plan Frameworks

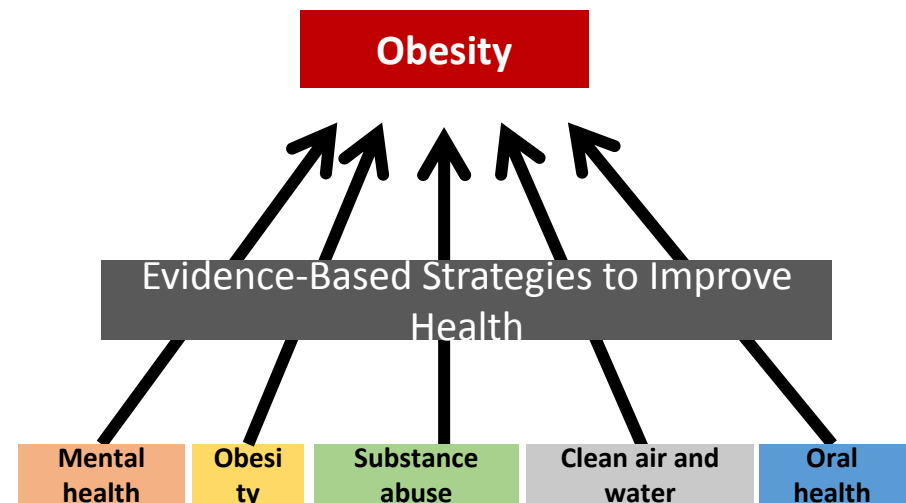
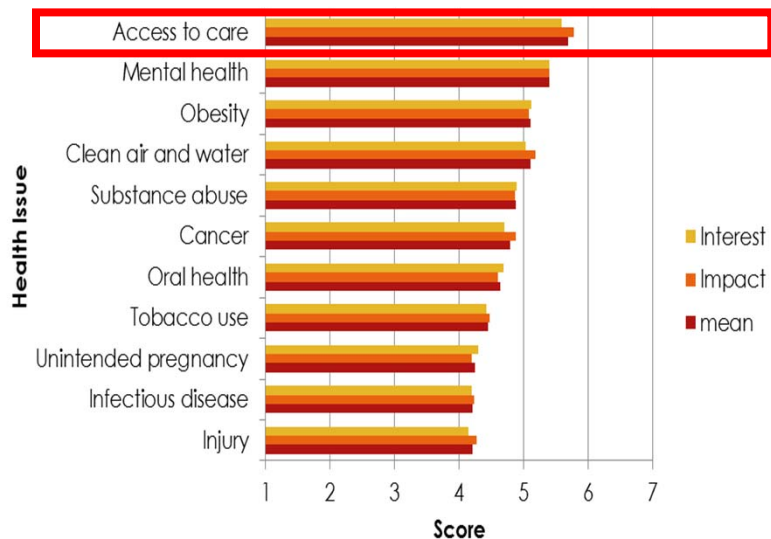
- Collective Impact



Kania, J Kramer, M. *Collective Impact*. Stanford Social Innovation Review. 26-41. 2011

PHIP Priority Areas

- Priority Areas
- Identified by prioritization process
 - Access to Care
 - Obesity



Images obtained from Prioritization Process Report, for complete Report visit: www.sjbhd.org

PHIP Priority Areas

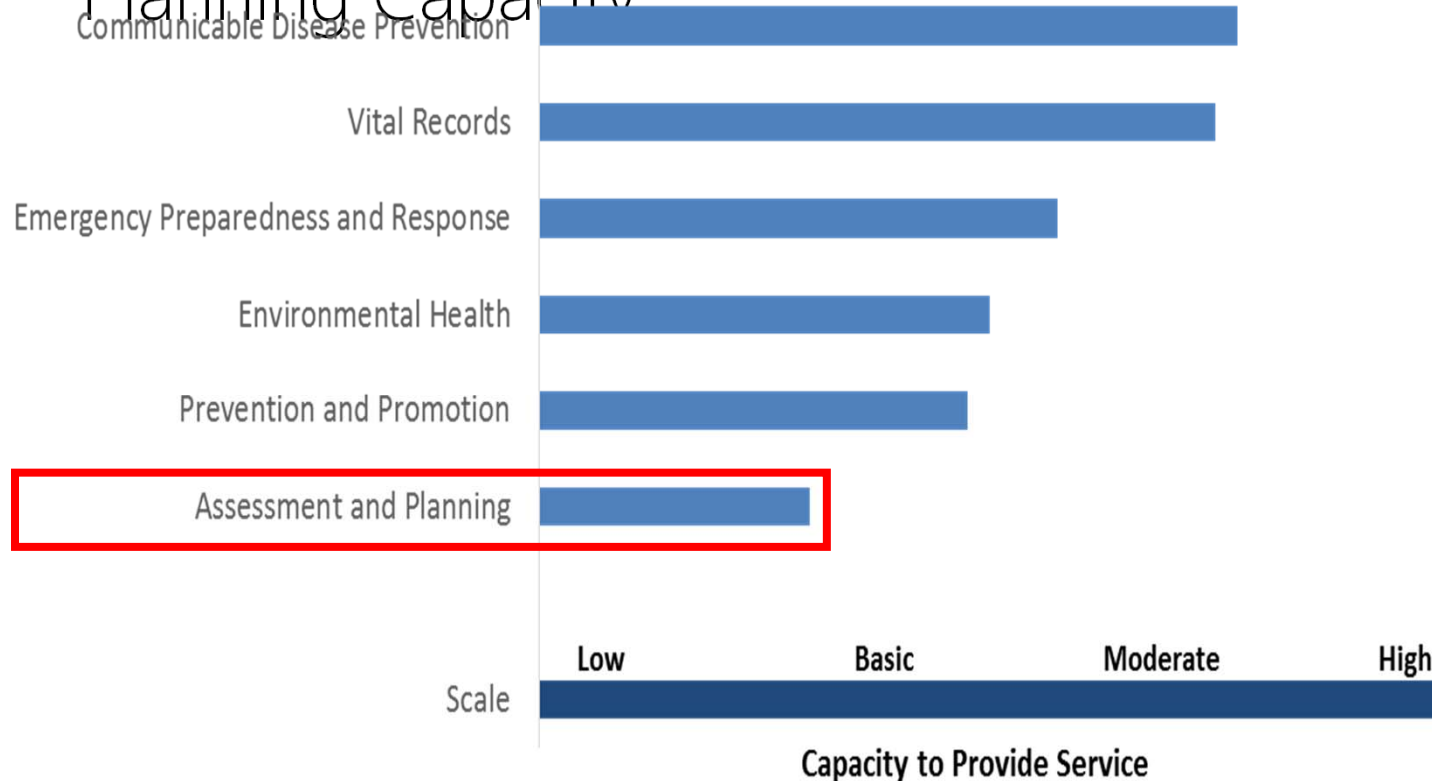
- Identified by [capacity estimation](#)
- Annual Report Survey Data estimates system capacity to deliver Core Public Health Services:
 1. Administration and Governance
 2. Assessment, Planning, and Communication
 3. Vital Records and Statistics
 4. Communicable Disease Prevention, Investigation and Control
 5. Prevention and Population Health Promotion
 6. Emergency Preparedness and Response
 7. Environmental Health

PHIP Priority Areas

- Annual Report Survey Data
- Designed by CDPHE and Colorado LPHA
- Creates [capacity estimation](#) by measuring perceived:
 - Stability of funding
 - Ability to serve the majority of the population
 - Ability to measure outcomes and address needed improvements
 - Use of current knowledge and best practices in delivery
 - Following of current national standards
 - Support from elected offices and other system partners

PHIP Priority Areas

- Identified by **capacity estimation**: Assessment and Planning Capacity



San Juan Basin Health Department

Mission: San Juan Basin Health's mission is to protect human and environmental health and inspire well-being in our community.

Vision: We are leaders aiming to achieve healthy communities and **health equity**.

PHIP Priority Areas

- Identified to increase alignment with SJBH Vision, Statewide Initiatives and National Initiatives: Focus on Health Equity

Statewide:

- Colorado Department of Public Health and Environment: employs Health Equity Model to quantify and improve health
- The Colorado Trust: hosted learning series on Health Equity and provides funding for initiatives that create Health Equity

National:

- Centers for Disease Control: defines achieving Health Equity as a 'primary goal'
- Public Health Accreditation Board (PHAB): requires that documentation include description of health status disparities, Health Equity, and high health-risk populations

PHIP Priority Areas

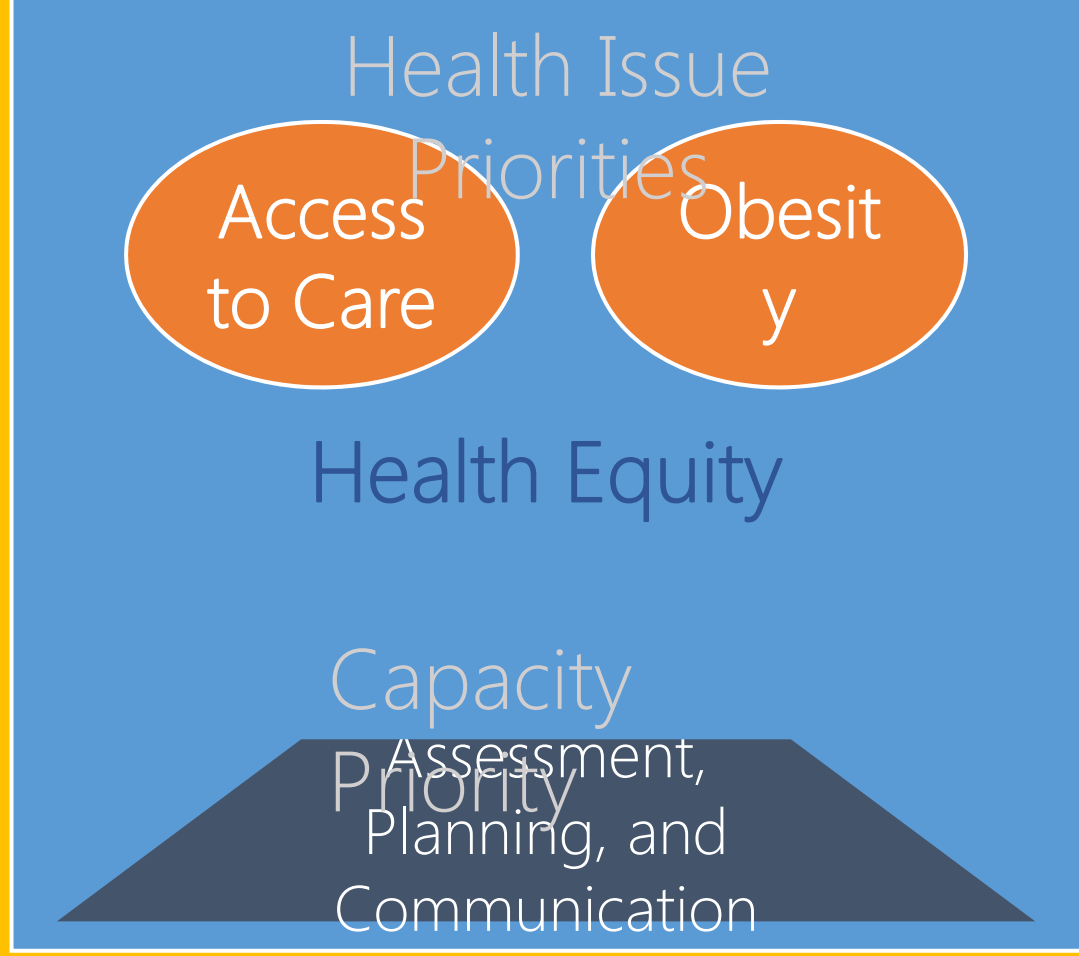
- Health Equity “is achieving the highest level of health for all people, equalizing the conditions for health for all groups, especially for those who have experienced socioeconomic disadvantage or historical injustices.”

Public Health Improvement Plan

- Integrates:
 - Health Equity
 - Access to Care
 - Obesity
 - Assessment, Planning, and Communication Capacity
 - Evidence-Based Public Health Practice
 - Collective Impact Framework

Structured Collaboration

Decision-Making Method



Evidence-Based Public Health

Collective Impact

Public Health Improvement Plan

Goals

Access to care

Improve community access to care through coordination, evaluation, and continued direct delivery of service.

Obesity

Measure and prevent obesity.

Capacity to improve community health

Increase San Juan Basin Health's ability to lead in the measurement, communication, planning, and evaluation of community health in Southwest Colorado.

Public Health Improvement Plan

- Action Plans

- Categorized by Priority Areas
- Integrate a focus to promote Health Equity
- Aim to employ Evidence-Based Public Health Practice and Collective Impact frameworks

Priority Area: Access to Care

Improve community access to care through coordination, evaluation, and continued direct delivery of service.

Goals	Interventions and Strategies
01. Continue to provide care coordination services	a. Create a sustainability plan
02. Evaluate direct services provided by SJBH	a. Conduct evaluation of programs that provide direct health services (e.g., immunization program)
03. Assist in the integration of mental health services with other direct services	a. Participate in statewide mental health priority workgroup b. Engage with local mental health providers to understand available services and opportunities for integration of services c. Join local community mental health stakeholder efforts d. Utilize Collective Impact Framework to determine SJBH community role
04. Focus on promoting health equity	a. Obtain 2013 Colorado Health Access Survey data to identify trends and disparate subpopulations,

Priority Area: Obesity

Measure and prevent obesity.

Goals	Interventions and Strategies
01. Improve surveillance of obesity prevalence and trends.	a. Maintain data sharing agreement to monitor and communicate local obesity trends among children
02. Adopt strategies to increase healthy eating and active living	a. Participate in statewide Obesity workgroup b. Select evidence-based interventions to increase healthy eating and active living c. Collaborate with regional local public health agencies that have prioritized obesity d. Utilize Collective Impact Framework to determine SJBH community role
03. Focus on promoting health equity	a. Determine subpopulations most at risk of obesity in Southwest Colorado b. Continue to provide evidence-based programs that decrease risk of obesity for high-risk subpopulations (e.g., WIC, Worksite Wellness, School-based Programs)

Priority Area: Assessment, Planning, Communication

Increase San Juan Basin Health's ability to lead in the measurement, communication, planning, and evaluation of community health in Southwest Colorado.

01. Improve current health planning infrastructure	<ul style="list-style-type: none">a. Increase capacity by creating and filling Health Planner staff positionb. Further develop internal staff capacity for measurement, planning, and evaluation in all levels of organizationc. Continue to strategize about SJBH's relationship with La Plata and Archuleta Countyd. Integrate local program-level data into decision making regarding program delivery and effectiveness
02. Lead efforts to measure and communicate community health status	<ul style="list-style-type: none">a. Continue to work in collaboration with community organizations to conduct community health assessmentsb. Update PHIP annuallyc. Utilize Collective Impact Framework to determine SJBH community role

Priority Area: Assessment, Planning, Communication

Increase San Juan Basin Health's ability to lead in the measurement, communication, planning, and evaluation of community health in Southwest Colorado.

03. Intentionally align work and organizational structure with SJBH Mission/Vision, Board of Health 2012-2016 Focus Areas, Colorado State Efforts, National Efforts, and Evidence-Based Public Health Practice	<ul style="list-style-type: none">a. Develop communication plan describing the mission, vision, and values of SJBHb. Create internal structure, resources and staff to incorporate evidence-based public health practice into decision making
04. Focus on promoting health equity	<ul style="list-style-type: none">a. Measure, monitor, and communicate health disparities

PHIP Aims to Engage the Public Health System

The public health system includes:

- Public health agencies at state and local levels
- Healthcare providers
- Public safety agencies
- Human service and charity organizations
- Education and youth development organizations
- Recreation and arts-related organizations
- Economic and philanthropic organizations
- Environmental agencies and organizations

Intended Local Partners for Implementation Process

Archuleta and La Plata Counties

Axis Health Systems

Citizens Health Advisory Council

Colorado Department of Public Health and Environment (CDPHE)

Colorado Local Public Health Agencies with similar priorities

Fort Lewis College

Health Alliance of La Plata County

Local Governments and Planning Departments

Mercy Regional Medical Center

Pagosa Springs Medical Center

Private Providers

Regional Local Public Health Agencies

Rocky Mountain Health Plans

San Juan Basin Health Department Staff and Board of Health

Southwest Colorado Area Health Education Center (SWCAHEC)

Southern Ute Indian Tribe

and others...

Integration with Statewide Plan

This plan follows the Colorado Health Assessment and Planning System (CHAPS) created by the Office of Planning and Partnerships at CDPHE and aligns with the assessment and planning goal of the statewide health improvement plan.

Financial Resources

San Juan Basin Health Department continually seeks ways to develop and sustain funding sources for the delivery of Core Services and additional programming to meet the needs of the community.

Implementation of the Plan

