



San Juan Basin Health Department 2013 Annual Report

SAN • JUAN • BASIN
HEALTH
DEPARTMENT

sjbhd.org | WE PROTECT HUMAN AND ENVIRONMENTAL HEALTH AND INSPIRE WELL-BEING IN OUR COMMUNITY.

How
are
you?



4,806
CERTIFICATES

1,927

Birth Certificates

2,879

Death Certificates



151
COMMUNICABLE
DISEASE CASES

Programs and Services

In 2013, San Juan Basin Health (SJBHD) offered the following programs and services to Archuleta and La Plata counties:

Birth and Death Certificates

SJBHD record and report on births and deaths (vital statistics) in accordance with state regulations and policies.

- Provided 4,806 certificates:
 - 1,927 birth certificates
 - 2,879 death certificates

Communicable Disease

SJBHD is the organization responsible for monitoring incidence and distribution of disease in our counties. We are also charged with preventing and controlling vaccine-preventable diseases; zoonotic, vector, air-borne, water-borne and food-borne illnesses; and other diseases that are transmitted person-to-person. In addition, we provide screening and guidance to healthcare practitioners and the public on suspect cases, potential exposures, and other communicable disease issues.

- 151 communicable disease cases reported in Archuleta and La Plata counties
 - 18 confirmed cases of Pertussis
 - One active case of Tuberculosis
 - 18 animals tested for Rabies with two positive results. Potential human exposures in the positive cases resulted in Rabies Post Exposure Prophylaxis (treatment) for those exposed



Emergency Preparedness

In coordination with local, state, and federal agencies and public and private sector partners, we prepare and respond to emergencies with public health or environmental health implications.

- Participated in regional training to enhance response preparedness. Training included epidemiology and foodborne illness, mental health first aid, and incident management
- Focused on community engagement and partnerships to improve our emergency preparedness capabilities

Environmental Health

We help protect and improve air, water, land, and food quality by identifying, investigating, and responding to community environmental health concerns, reducing current and emerging environmental health risks, and preventing communicable diseases. We do this in accordance with applicable laws and regulations.

- 164 new on-site waste water/septic permits issued
- 608 retail food establishment inspections in Archuleta, La Plata, and San Juan counties
- 6,000 bacterial water tests completed

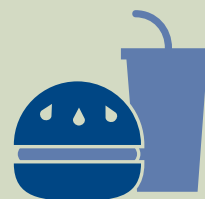
“Our public health and environmental staff continue their important work to improve health outcomes for all.”

—Liane Jollon, Executive Director

“Staff was very welcoming and helpful. I was nervous and they made me feel very comfortable.”

—Clinic Client

continued

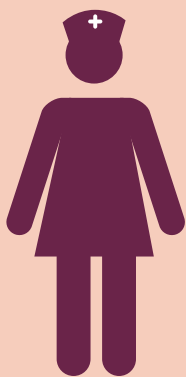


608

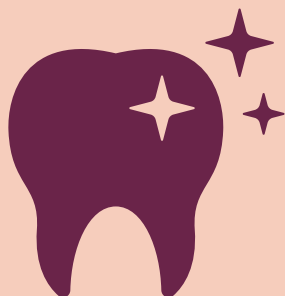
RETAIL FOOD
ESTABLISHMENT
INSPECTIONS

6,000

BACTERIAL
WATER TESTS
COMPLETED



409
NEW NURSE
NAVIGATOR
CLIENTS



880
VISITS TO OUR
DENTAL
CLINICS

Programs and Services, continued

Prevention and Wellness

These programs develop, implement, and evaluate policies and programs that promote healthy living and quality of life while reducing the incidence of preventable diseases, injuries, disabilities, and other poor health outcomes.

Care Coordination provides access, guidance, and advocacy for those who face barriers to healthcare. We take a community-wide approach to reducing those barriers through systems-level work. The program includes nurse navigators, the Temporary Assistance for Needy Families (TANF) program, Connect 4 Health Colorado coverage guides, the Promotora program, a Family Health Coordinator, and the Health Care Program.

- 409 new nurse navigator clients
- 150 families served with TANF
- 585 children and youth with special health care needs served
- 100+ Spanish-speaking clients served by Promotora
- 2,000 clients assisted with Medicaid by Family Health Coordinator in Archuleta, La Plata, San Juan, Montezuma, and Dolores
- 1,049 people provided with outreach education or one-on-one support by Connect 4 Health Colorado coverage guides

Dental provides preventive dental services for Medicaid and CHP+ (eligible children 0-21 years and pregnant women) clients and offers a sliding fee schedule for children. Services include restorative treatment, oral screening, cleaning, oral hygiene instruction, fluoride varnish application, and sealants.

- 880 visits to our dental clinics in Archuleta and La Plata counties
- 399 patients seen at school and community outreach events

Health Policies and Systems focuses on prevention work aimed at reducing alcohol, tobacco and other drug use by youth (middle- and high-school students) and young adults. The program leverages the partnerships with the Celebrating Healthy Communities coalition along with other individual community partners to maximize impact in our community. Projected outcomes include a reduction in the frequency of youth alcohol consumption, reduction in number of tobacco users, and an increase in number of developmental assets self-reported by youth.

- Initiated a Designated Driver campaign to encourage responsible drinking behaviors
- Created a six-month long tobacco prevention media campaign, which focused on secondhand smoke education and cessation resources.
- Launched social norm campaigns featuring data from the Healthy Kids Colorado Survey 2011-12. The campaigns reached youths and their parents and focused on prevention of underage alcohol use
- Hosted the second Annual Adult Role Model Award seeking youth nominations for adults that demonstrate positive, responsible behavior
- Started a Celebrating Healthy Communities - Pagosa Springs Coalition

Our **Immunization Program** offers immunizations to our community (children and adults), primarily to our underserved and uninsured populations. We also provide travel vaccinations and are the only Yellow Fever vaccination provider in the area. In 2013, we gave 132 of these vaccinations in 2013. In addition, in collaboration with Colorado Department of Public Health and Environment (CDPHE), San Juan Basin Health monitors community immunization levels.

- 4,498 immunizations given

Nurse-Family Partnership provides mothers with support in parenting their children from pregnancy through second year by way of home visits from registered nurses.

- Increased caseload from 68 to 75 first-time moms, who receive visits every other week for 2.5 years

Options for Long Term Care offers services that help the elderly and individuals with disabilities stay in their homes as long as possible. We assist eligible clients in getting help with homemaking, personal care, non-medical transportation, home modifications, and respite care.

- Helped 340 clients stay safely in their homes

Sexual/Reproductive Health provides sexual healthcare to men, women, and teens, including STD testing and treatment, annual exams, and birth control.

- 1,079 client screenings provided:
 - 450 Chlamydia and Gonorrhea tests
 - 248 HIV tests
 - 14 Hepatitis C tests
 - 179 Pap tests
- 88 Women's Wellness Connection clients were provided with access to breast and cervical cancer screenings

Women, Infants, and Children (WIC) provides supplemental foods, healthcare referrals, and nutrition education for low-income pregnant, postpartum women, and to infants and children up to age five who are found to be at nutritional risk.

- 1,068 average monthly WIC caseload
- 48 clients average caseload for breastfeeding peer counselor

Worksite Wellness Program provides resources, support, and referrals for business owners and employees to create healthier, more productive work environments.

- 19 local businesses participated
- 273 employees served
- 245 screenings completed

"The San Juan Basin Health Department's Worksite Wellness Program provided information and resources that are posted around our office and are used weekly. The program is a high value offering that we were able to provide to our employees for very little cost. It has transformed the wellness culture in our workplace through the provision of individual counseling, equipment, and celebratory events."

—Worksite Wellness client



4,498
IMMUNIZATIONS



IN 2013 WE HELPED
340
CLIENTS
STAY SAFELY IN THEIR HOMES



1,079
SCREENINGS
SEXUAL/REPRODUCTIVE HEALTH



How are you?

Public Health Improvement Plan

In December 2013, the San Juan Basin Health Board of Health approved the 2013–2018 Public Health Improvement Plan for Archuleta and La Plata counties. This plan is based on data and input gathered in our Community Health Assessment and health prioritization process. Members of the public were engaged in the prioritization process through surveys and community discussions. As a result of this work, San Juan Basin Health’s Public Health Improvement Plan current priorities are:

- **Access to care**

Improve community access to care through coordination, evaluation, and continued direct delivery of service

- **Obesity**

Improve measurement capabilities and implement programs to help prevent obesity

- **Assessment, Planning, and Communication**

Increase San Juan Basin Health’s ability to lead in the measurement, communication, planning, and evaluation of community health in Southwest Colorado

In the coming year, San Juan Basin Health will use the collective impact model to work with the community to make improvements on our goals. The collective impact model allows for structured collaboration to achieve stated goals with the purpose of creating effective and efficient action and meaningful and sustainable change. Many local public health agencies have selected this model to help them achieve their health improvement plans. In addition, San Juan Basin Health Department will use an Evidence-Based Public Health Practice Framework to create a structured decision-making process. This will improve the likelihood of successful, cost-effective programs for our community.

Throughout this work, health equity will be a focus. Health equity is defined by the Colorado Department of Public Health and Environment as **“achieving the highest level of health for all people and equalizing the conditions for health for all groups, especially for those who have experienced socioeconomic disadvantage or historical injustices.”**

A commitment to health equity is found in both our vision statement and our core values. We are invested in developing the understanding about what health equity is across our community. It is critical for all of us to understand that what determines whether an individual reaches his or her fullest potential is not solely determined by healthcare and health behaviors. It is also influenced by a variety of other social, economic, and environmental factors that we seldom consider, including job and housing status, access to food, education, and many others. We believe that health equity is what ties all of San Juan Basin Health’s programs together and we are committed to shining the light on health equity to further enrich our community.

Audited Financials

INCOME

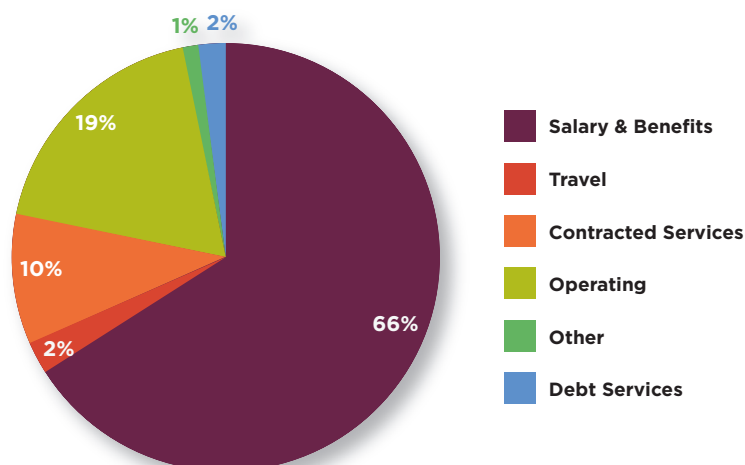
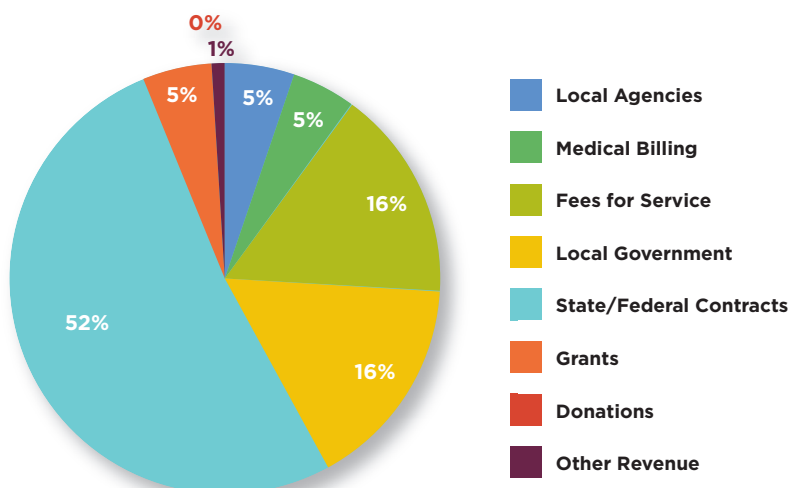
Local Agencies	5%	\$ 220,984
Medical Billing	5%	256,299
Fees for Service	16%	802,359
Local Government	16%	790,728
State/Federal Contracts	52%	2,604,544
Grants	5%	241,452
Donations	0%	11,662
Other Revenue	1%	37,637

TOTAL \$ 4,965,665

EXPENSES

Salary & Benefits	66%	\$ 3,067,631
Travel	2%	104,484
Contracted Services	10%	440,261
Operating	19%	860,910
Other	1%	40,336
Debt Service	2%	103,400

TOTAL \$ 4,617,022



Mission

To protect human and environmental health and inspire well-being in our community.



SAN ■ JUAN ■ BASIN HEALTH DEPARTMENT

Board of Health

Bob Ledger *Chair*
Shere Byrd
Brad Cochennet
Karin Kohake
Bob Lieb
Michael Whiting
Bill Willson

Office Locations

Durango Office
281 Sawyer Drive
Durango, CO 81303
(970) 247-5702

Pagosa Springs Office
502 South 8th Street
Pagosa Springs, CO 81147
(970) 264-2409

Staff

Allie Anderson
Sue Austin
Marianne Ball
Lisa Barrett
Joe Baumgart
Barbara Benson
Charlie Berry
Amber Beye
Vanessa Boyd
Health Services Director
Greg Brand *Environmental Health Director*
Jill Brooks
Renee Burch
Kalisha Crossland
Sandy Dalenberg
Francilia Ehrig
Chad Englehardt
Nancy Folsom
Patsy Ford
Health Programs Director
Lani Foster
Joe Fowler
Rita Fowler
Cody Goss

Catherine Gustavson
Jane Henson
Wanda Humphrey
Danette Jackson
Tori Johnson
Liane Jollon
Executive Director
Kelly Keegan
Jeff Kobe
Ellyn Krauser
Sandra Lee
Codi Lott
Marla Luckey
Ursula Lujan
Claire Macpherson
Karen Maletich
Melinda Malone
Lesley Marie
Administrative Services Director
Diane Montoya-Scott
Mackenzie Morgan
Nicole Nelson
Claire Ninde
Kevin O'Connor

Flannery O'Neil
Health Planner and Communications
Nadine Ontiveros
Human Resources Director
Lyola Pacheco
Marybeth Paletta
Kathy Phelps
Kari Plante
Deb Poirier
Jenny Pritchard
Cheryl Roberts Lee
Lisa Sanchez
Cindy Schultz
Pat Senecal
Dawn Simard
Kristi Stump
Sarah Sullivan
Jennifer Toner-Antoniazzi
Cheryl Walters
Barbara Walton
Julie West
Inez Winter



Copies of this annual report are available free of charge. Call (970) 247-5702 or download at sjbhd.org/who-we-are/reports